

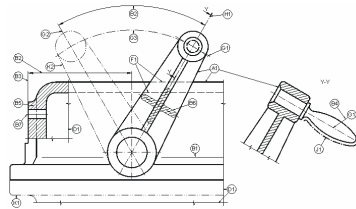


BUSINESS REPORT

THE COMPANY

Our business, established in 1952, has always been well-known for its customer service and for its continuous innovation. Thanks to our extensive business experience, we have been able to collaborate and learn skills from different areas such as:

- AUTOMOBILE INDUSTRY
- BUILDING INDUSTRY
- HOME AUTOMATION
- ELECTROMEDICAL INDUSTRY
- LABORATORIES
- ELECTRONICS INDUSTRY
- TRAIN INDUSTRY
- AERONAUTICS INDUSTRY
- DESIGN
- HOUSEHOLD ITEMS
- ...

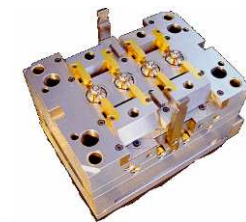


(Our facilities extension)

OUR ITEMS

Since our establishment we have focused on providing an integral service: from the initial idea to the storage, as well as managing our clients' logistics. We also have co-workers for chrome, painting, silk-screen print, ultrasonic welding, etc. We are noted for working closely with our clients from the very beginning to the final result, including the assembly and subassembly.

IDEAS
DESIGN
MATERIALS
PROTOTYPES
TOOLS
EQUIPMENT
VALIDATION
PRODUCTION



PROJECTS AND DEVELOPMENT

- We manage your project from the beginning, since your IDEA.
- We design, prototype and draw up plans for any piece you may require.
- We manage your mould together with your team with an excellent coordination, following the production schedules step by step.
- Your project is in good hands, we manage all the information you may need including:
 - Quality product dossier
 - Tool detailed specifications
 - Dimensional reports



ONE-PIECE HANDLE



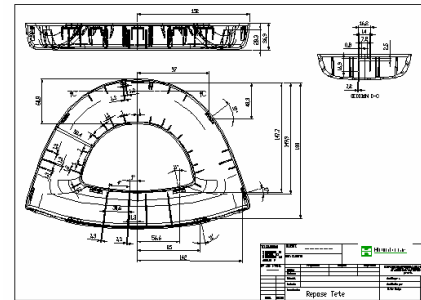
DIFFERENT-SIZED POWER TRANSFORMERS



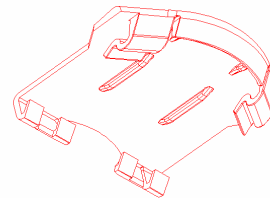
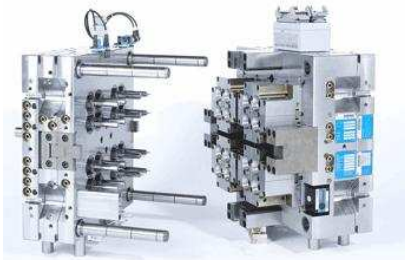
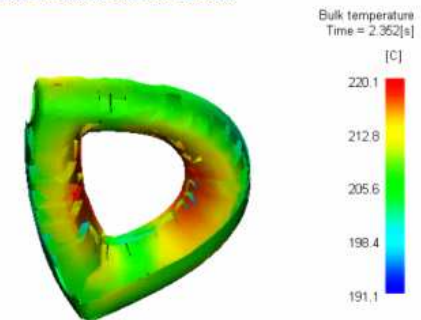
RANGE OF PRODUCTS

TOOLS AND MOLDS

- In order to correctly budget your project, we first do a draft of the mold design, as well as a simulation of plastic injection to detect any technical problems that the tool may cause. In case of any trouble, we will simplify the mold's design as much as possible without damaging its quality, in order to detect the possible mechanical interferences caused by the mold or by the pieces.



TEMPERATURAS DE MASA



- We have a mold workshop in our facilities equipped with the resources required for the precautionary maintenance of our molds as well as high quality correctives: spares, milling machines, hydraulic presses, grinding machines, etc.



QUALITY SYSTEMS

•STRATEGIC GUIDANCE TO QUALITY

- Product quality
- Quality of customer service
- Environmental quality (Emas)

•QUALITY SYSTEM BASED ON THE REGULATION UNE-EN-ISO-9001:2000

- Continuous improvement
- Resource optimization
- Staff committed to quality

•ALSO COMMITTED TO ENVIRONMENT

-ISO-14001

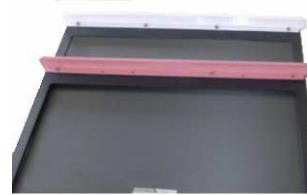
•OUR STRATEGY

-Our aim: Full quality (zero non-conformity)



OUR SERVICES

- Design
- Prototype
 - Main advantages
 - Cost saving
 - Bounds checking
 - Types of prototyping:
 - Rapid prototyping
 - Estereolitography
 - Silicone tools
 - Mechanical
- Painting
- Labelling
- Ultrasonic welding
- Assembly



CATALOGUE



ADVERTISING



DISPLAY STAND



BOTTLE RACK

DISPLAYS STAND
(POS)

MEDICINE



SPLINT FOR CLUBFOOT



SPIROMETER

ELECTRONICS, HOME AUTOMATION, NEW TECHNOLOGIES



CANAL +



POWER TRANSFORMERS



FIRE DETECTORS



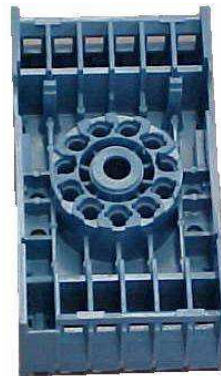
HOUSE AUTOMATION



SCALES



BIO-DIESEL



RELAYS



STAND FOR SOLAR PANELS



RETAINING WALLS



TELEPHONY



AERONAUTICS
PRODUCTS



AERSPACE
PRODUCTS



ALARM SWITCHBOARD

AUTOMOBILE INDUSTRY



HEADLIGHT



PEDALS



HEADREST



GPS STAND



DECORATION AND HOUSEHOLD ITEMS



COOLERS



BATH ROLL STAND



AIR FRESHENER

MORE ITEMS



AMPOULE STAND



CASES



TOYS



FICTITIOUS ICE



SALT SHAKER

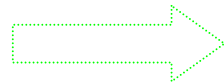


BEARINGS

HOW DO WE WORK IN PHSA?



Labels



Destino:	
GRUPO	
Artículo:	
GR 004571290 IMPR.CONSG	
SOPORTEEIKO APS	
UDS:	45
OPERARIO:	
FECHA:	BOLETIN: 4316

Client name

Client's internal reference

Units per box

Responsible for production

Order number

Date of manufacture



Control of batch number

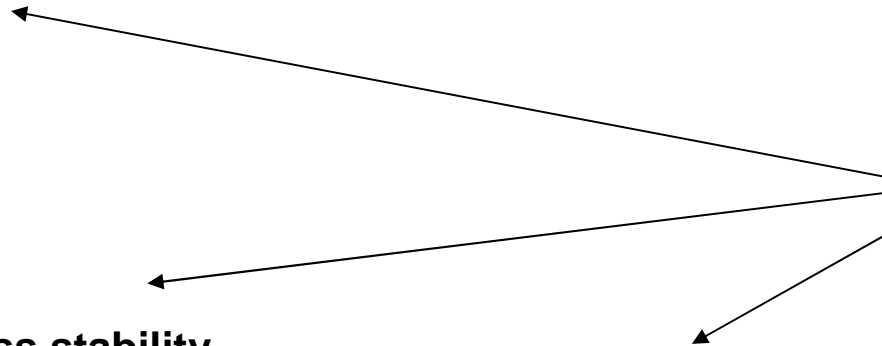
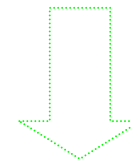
Process stability

Training

Traceability

Maintenance

preventive – correctness



CONTACT US

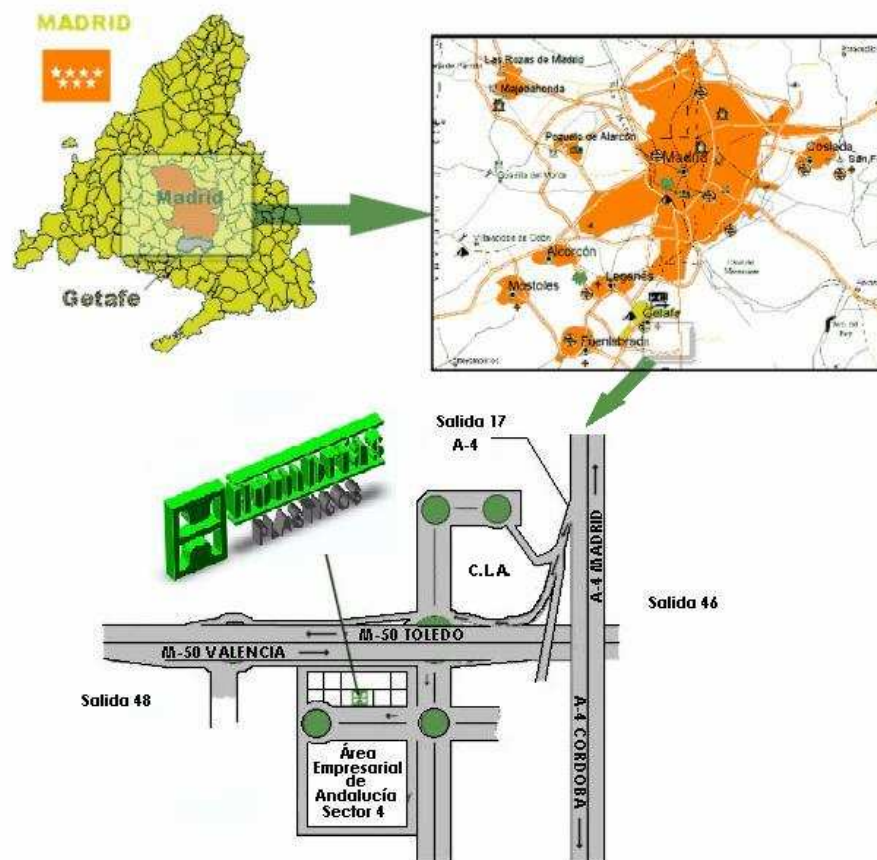
ÁREA EMPRESARIAL ANDALUCÍA
AVDA. RÍO GUADALQUIVIR 5,
28906 GETAFE (MADRID)
SPAIN

Exit 17 N-IV
Exit 48 M-50

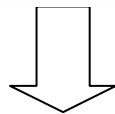
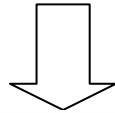
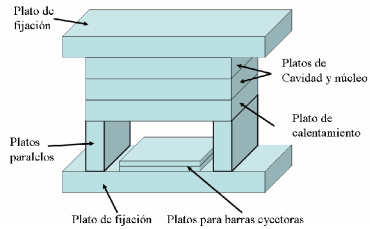
TIN: A- 28 41 34 41
Telephone: 0034 91-6 91 91 92
0034 91-6 91 92 84
Fax: 0034 91-6 91 92 80

fjhumbriasl@plasticos-humbrias.com

www.plasticos-humbrias.com



SUMMARY PROCESS



• Assembly

- Cleaning
- Placing
- Adjustment

• Production

- Raw materials
- Staff
- Cavities
- Injection molding cycle :
 - 1st and 2nd injection

Cooling process

Movements

• Other processes

- Assembly
- Painting
- Ultrasonic welding
- Logistics